

Electron Tomography Training Workshop

(Hitachi HT7700 TEM and HD-2300 STEM Instruments)

HITACHI
Inspire the Next

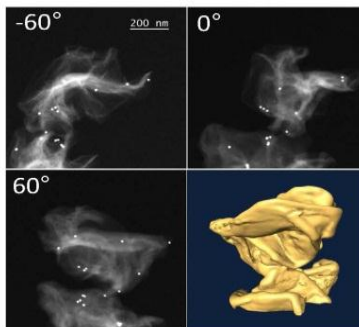


Fig.5 (a)-(c) Z-contrast STEM images of two crumpled graphene particles coated with Au nanoparticles tilted at 0, 60 and 120 degree, respectively. (d) The surface of reconstructed volume of the graphene particles.



Tuesday, 3/12/13, Seminar Presentations and Demonstration Sessions

- 10:00 a.m.–11:00 a.m.** “Examples of Recent Applications of Electron Tomography at Northwestern University”
Guest Speaker: Jinsong Wu, Ph.D.
Research Assistant Professor, Materials Science & Engineering;
NUANCE - EPIC, TEM Microscopist
- 11:00 a.m.–12:00 p.m.** “Exploring Samples in 3-Dimensions: Fundamentals, Methods, and Applications of Electron Tomography”
Guest Speaker: Lynn Blubaugh
Application Engineer, Hitachi High Technologies America, Inc.,
Nanotechnology System Division
- 12:00 p.m. - 1:00 p.m.** **Q&A Session; Lunch** (*registered participants only*)
Location: Pancoe Auditorium, 1st Floor, Room 105,
2200 Campus Drive, Evanston Campus
- 1:00 p.m. – 5:00 p.m.** **Demonstration Session on HT-7700 on Data Acquisition****
Location: Cook Hall, Room 1050B, 2220 Campus Drive,
Evanston Campus

Wednesday, 3/13/13, Demonstration Sessions

- 9:00 a.m. –12:00 p.m.** **Demonstration Session on Hitachi EMIP Software – Reconstruction****
- 2:00 p.m. - 5:00 p.m.** **Demonstration Session on Volume Visualization****
General HT7700 TEM Questions
Location: Cook Hall, Room 1050B, 2220 Campus Drive,
Evanston Campus

Registration Deadline (free): Tuesday, March 5, 2013 ** Limited Seating

RSVP at: <http://goo.gl/qhVrZ>

For more information, please contact Jinsong Wu, 847-491-7807,
jinsong-wu@northwestern.edu

Acquisition of the tomography holder is generously supported by Northwestern University's Core Facilities Equipment Funding and Materials Research Science and Engineering Center (MRSEC).